



**WE STAND WITH
MINNESOTA
FOUNDATION PAPER PIECING
PATTERN**

We Stand with Minnesota Foundation Paper Piecing Pattern

This pattern was designed to show Minnesotans that we all support them. It was designed to be user-friendly and is divided into blocks identified by letters and numbers. Each block is sized (5.5" x 5.5") to easily print on standard size printing paper. When complete, this quilt measures 22" x 16.5" but can be resized as desired.

This is a beginner pattern. However, a basic understanding of foundation paper piecing prior to starting this design is required.

Understanding the Blocks

Within each block, pieces are labeled in the order in which they are sewn (A, B, C, D etc.) and with the fabric color (using codes described on page 3).

Sections in a Block: Some blocks are divided into multiple sections indicated by dashed lines. Before sewing, cut up the block along the dashed lines. After each piece in a section is sewn, use a ruler to measure 1/4" from the seam and trim the excess fabric.

- Sew those pieces back together in the same way they were connected prior to being cut. The order pieces should be sewn in are labeled on the blocks. The section labels are indicated by a rectangle with rounded corners (see the key below).

The Key

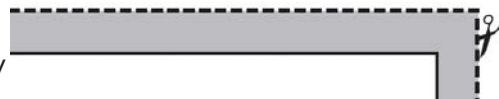
Section divider - cut along this line -----

Seam line - sew along this line _____

Letters and numbers with a rectangle indicate the block label

Letters and numbers with a rounded corner rectangle indicate the section label

Seam Allowance - The seam allowance is shown only around the block and not in between sections. If you are curious why this is please watch this [video](#).



For more information on how to use the blocks click [here](#).

Fabric Choices

This small wall-hanging size quilt, is designed to be completed with four colors. Any colors can be used.

Examples of labels that will be used on blocks:

A/BK -A means sew this piece first. BK means the background color.

Color Swatches

Colors Cdes



PE-550 PE-481 PE-430 PE-410

Fabric Amounts

BK requires a little less than a half yard. For all other colors you will need a fat quarter each.

You can purchase a kit for this pattern [here](#). All profits will be donated to Minnesota organizations [here](#).

Thank you for purchasing this pattern.
If you finish the quilt, I would love to see it! If you post it on
social media, please tag me or email me a picture.

HAPPY QUILTING!



www.colesquilts.com



cole@colesquilts.com



Instagram: [@colesquilts](https://www.instagram.com/colesquilts)



Reddit: [u/colerw81](https://www.reddit.com/u/colerw81)

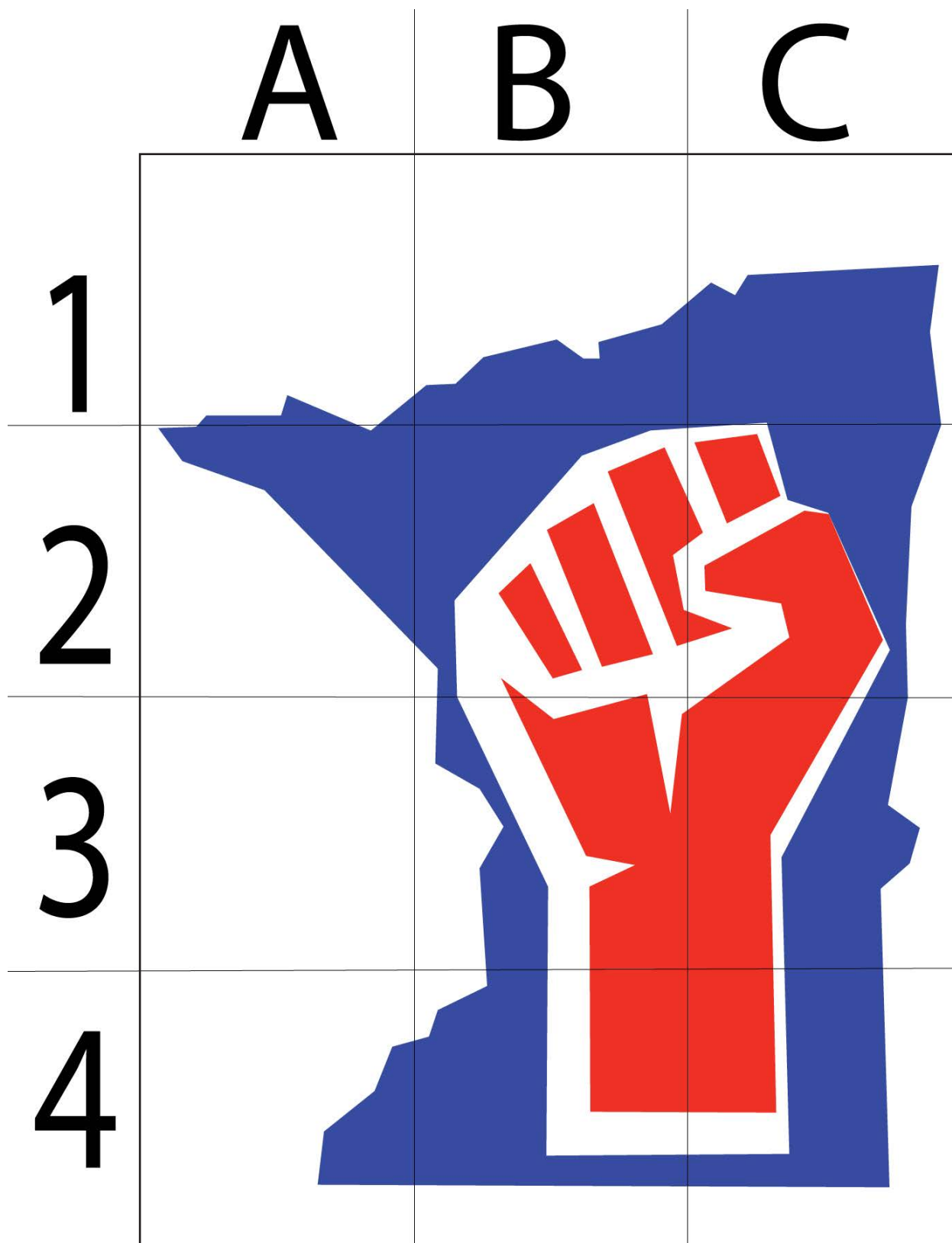


Youtube: [@colesquilts](https://www.youtube.com/@colesquilts)



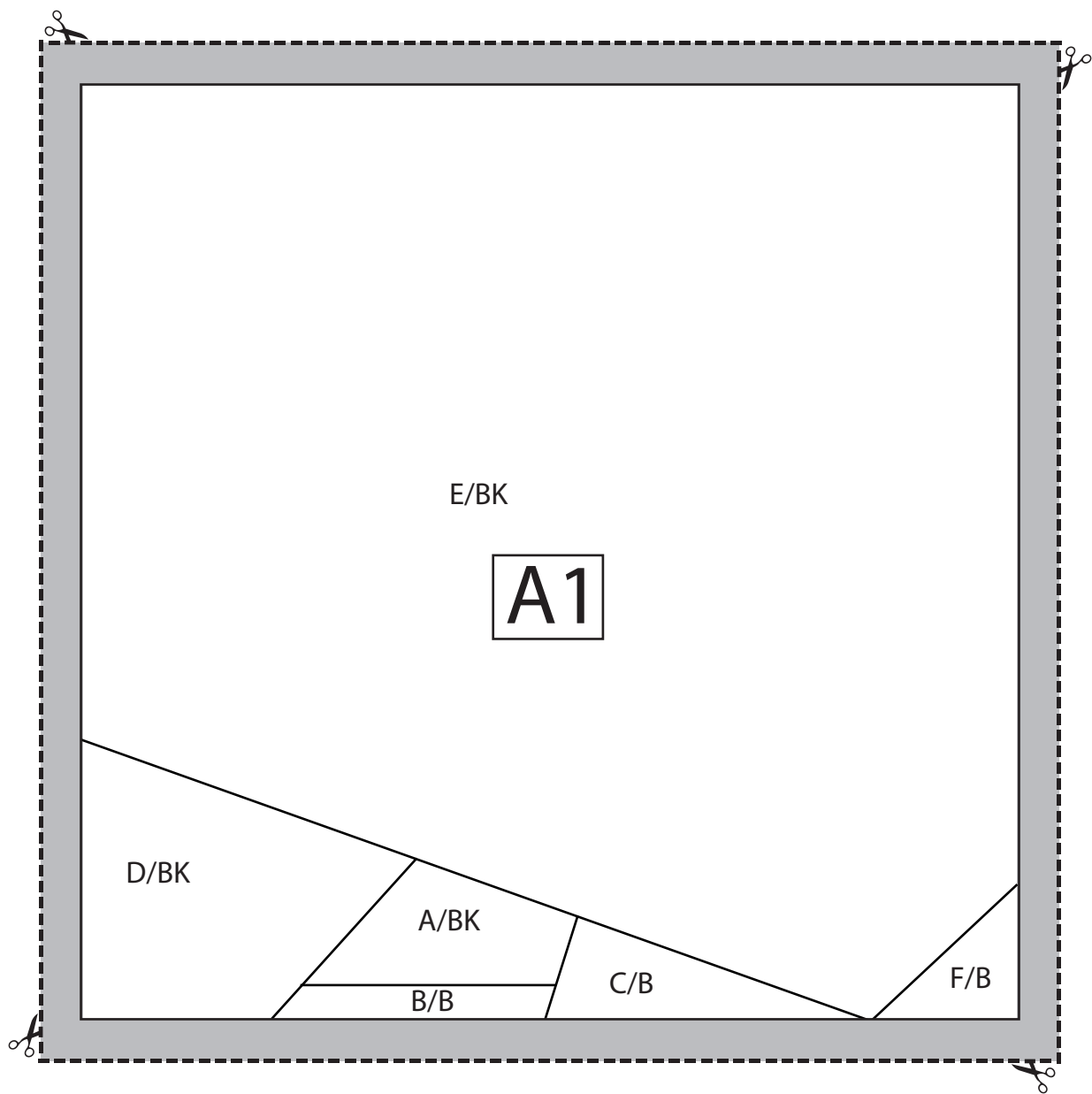
TikTok: [@colesquilts](https://www.tiktok.com/@colesquilts)

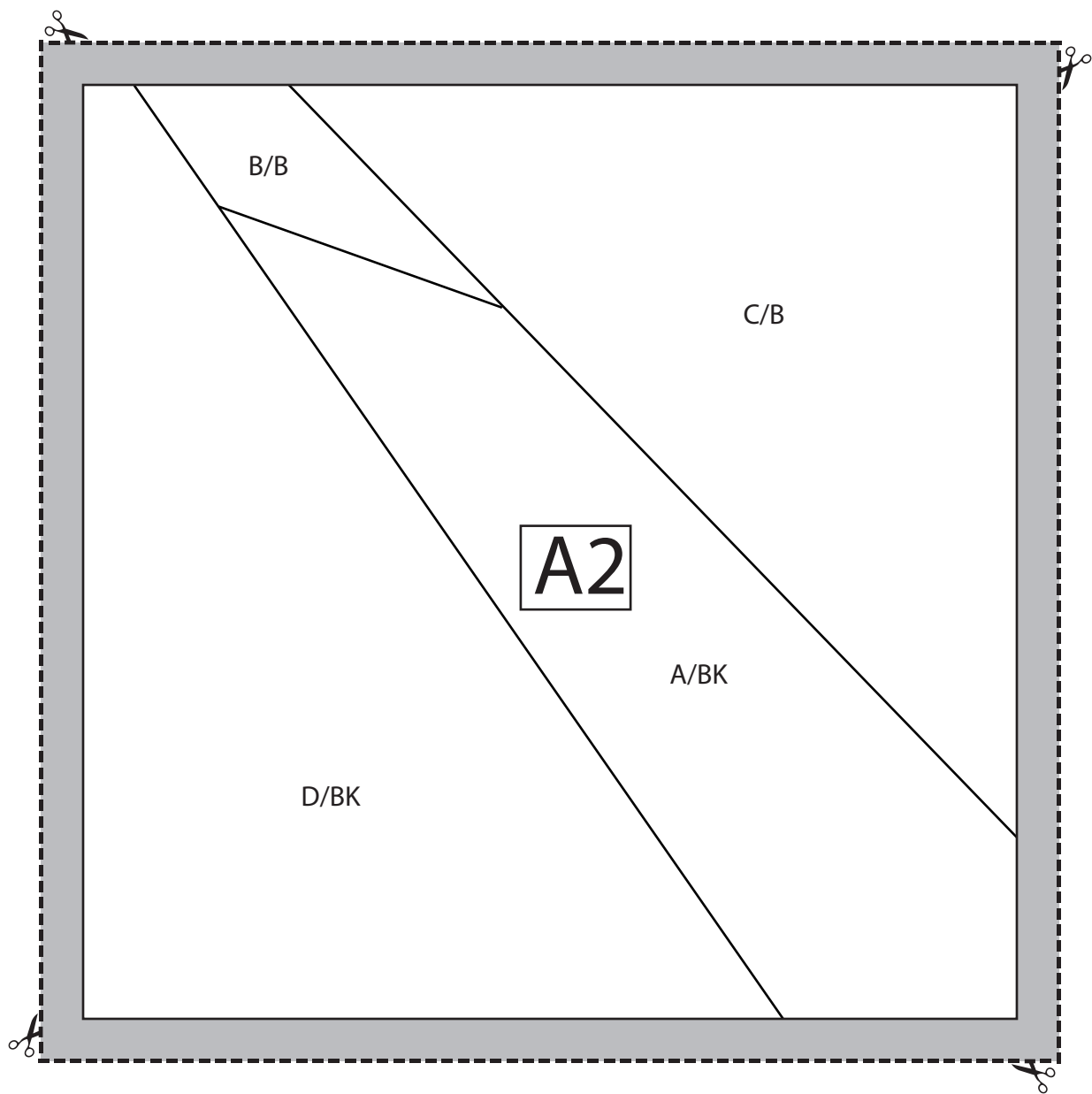


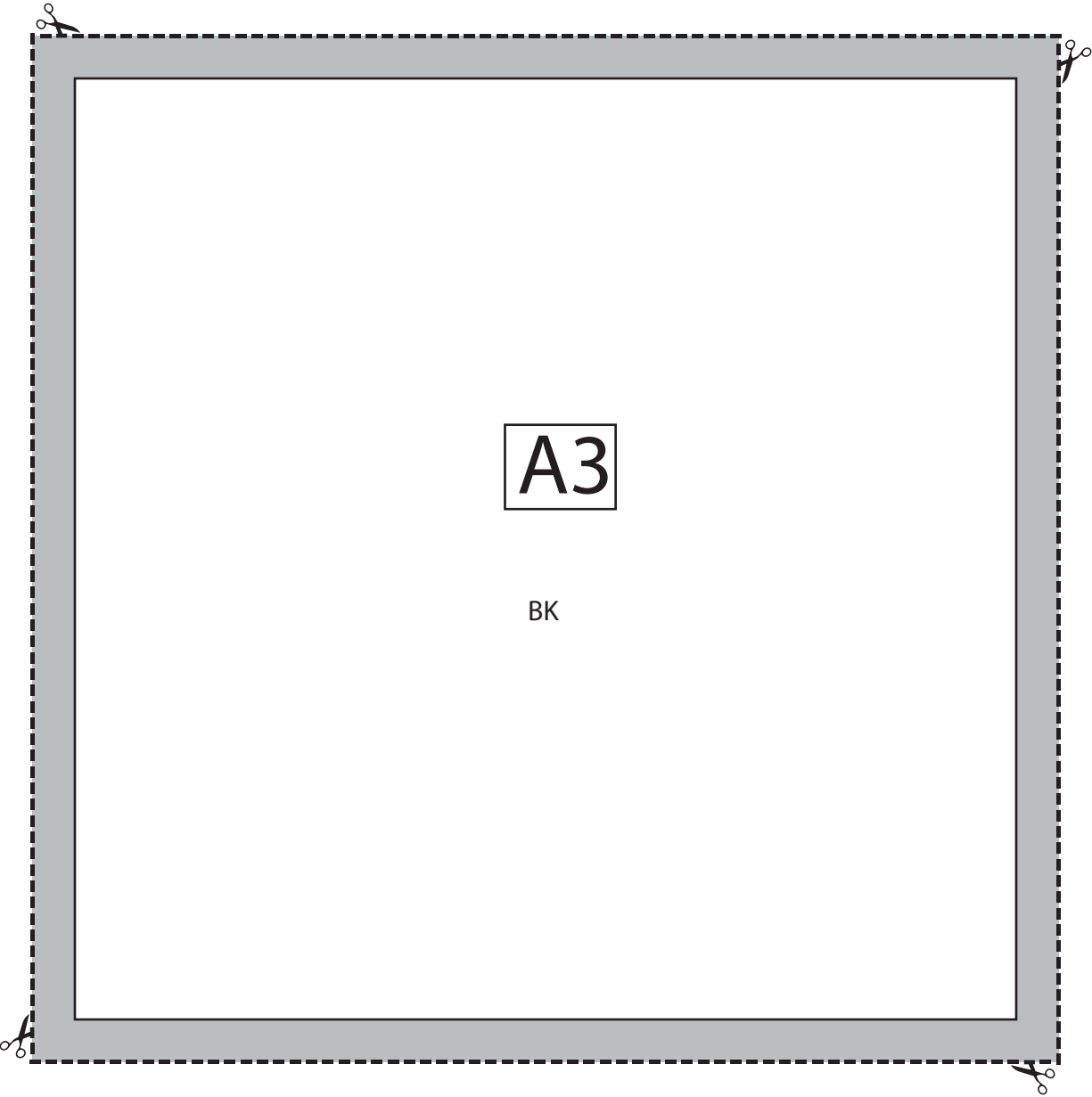


The above grid shows where each block belongs in the quilt. Keep in mind that this picture is a mirror image of how the quilt will look when it is finished. This is what the quilt will look like when you are looking at the paper blocks.









A3

BK

