



**KALEIDOSCOPE OWL
FOUNDATION
PAPER PIECING SCRAPY QUILT
PATTERN**

KALEIDOSCOPE OWL FOUNDATION PAPER PIECING SCRAPPY QUILT PATTERN

This pattern was designed to be user friendly and is divided into blocks identified by letters and numbers. Each block is sized to easily print two blocks at a time on standard size printing paper (5"x5" each). When complete, this quilt measures 40"x60" but can be resized as desired.

This is an beginner level pattern. However, a basic understanding of foundation paper piecing prior to starting this design is required.

Understanding the Blocks

This quilt only has one block, by which I mean that all blocks are the same, only the fabric choices change. Within each block, pieces are labeled in the order in which they are sewn (1, 2, 3 etc.) and with the fabric color (using codes described on pages 3).

The Key

Edge of seam allowance - cut along this line -----

Seam line - sew along this line _____

Letters and numbers with a rectangle indicate the block label

A2

Seam Allowance - The seam allowance is shown only around the block. Notice that the seam allowance extends to the edge of the paper so some of the grey will not print. Please use a ruler to measure 1/4".




For more information on how to use the blocks click [here](#).


The Fabric

This quilt is designed as a way for you to use up your scraps. Therefore, there will be no fabric amount requirements listed. You could also use a few jelly rolls. Since it is designed for scraps, this pattern does not contain a specific list of all colors included in the quilt. Instead, a greyscale, tone codes and color swatches will be added to the blocks. Feel free to get creative. As long as a piece is close to the color on the swatch your quilt will turn out great.

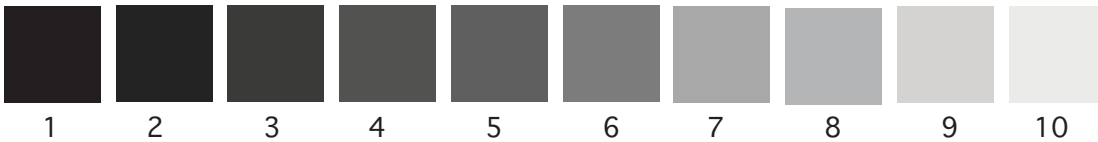
Fabric Choices

Examples of labels that will be used on blocks:

1/3G -1 means sew this piece first. 3 means that the color is a 3 on the greyscale (see below). G means Green. 

2/6O -2 means sew this piece second. 6 means that the color is a 6 on the greyscale (which is lighter than a 3). O means orange. 

Greyscale





The greyscale indicates how light or dark a color is. The tone of the color is how warm or cool a color is (for example the word RED describes tone). If you wanted to get creative you could, in theory, use any tone. As long as you used the greyscale, your quilt would be a uniquely colored owl. For more about how to use a greyscale watch [this video](#).

Tone

The tone will be indicated with a letter. The tone codes are listed below and the swatches show examples of different shade of each tone.

R-Red				BG-Blue Green			
RO -Red Orange				B-Blue			
O-Orange				BV-Blue Violet			
YO-Yellow Orange				V-Violet			
Y-Yellow				RV-Red Violet			
YG-Yellow Green				BR-Brown			
G-Green				T-Tan			
				GA-Grey			

There will also be the original color swatch on the blocks. Keep in mind that the number is the lightness, the letter is the tone but the intensity is not defined. Intensity is how much of the tone you see. For example a level 6 red could look like this  or this . One is more intense than the other. Looking at the swatches will help you choose your fabric.

THANK YOU FOR PURCHASING THIS PATTERN.
IF YOU FINISH THE QUILT, I WOULD LOVE TO SEE IT! IF YOU POST IT ON SOCIAL MEDIA,
PLEASE TAG ME OR EMAIL ME A PICTURE.

HAPPY QUILTING!



www.colesquilts.com



cole@colesquilts.com



Instagram: [@colesquilts](https://www.instagram.com/colesquilts)



Reddit: [u/colerw81](https://www.reddit.com/u/colerw81)

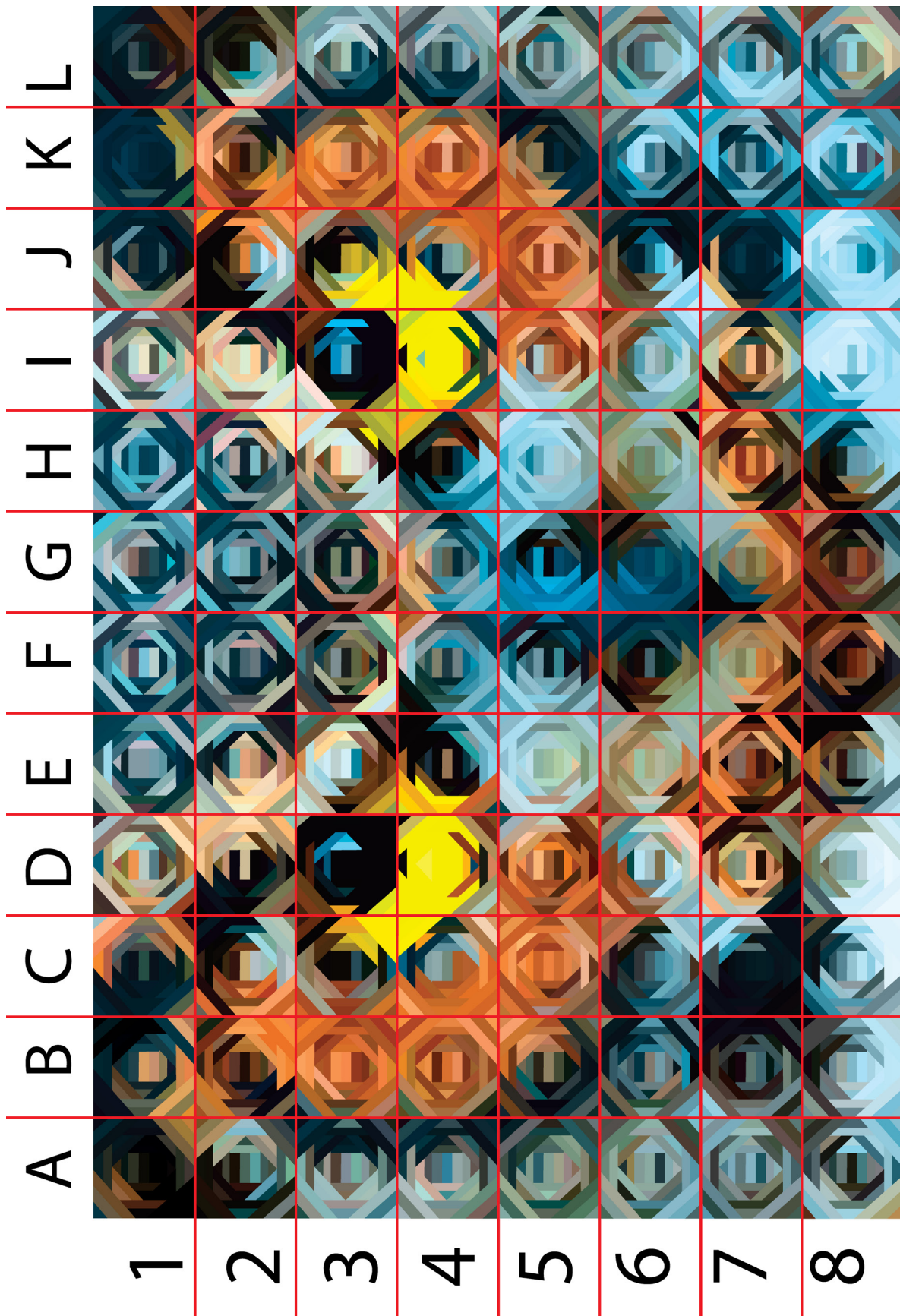


Youtube: [@colesquilts](https://www.youtube.com/colesquilts)



TikTok: [@colesquilts](https://www.tiktok.com/colesquilts)





The above grid shows where each block belongs in the quilt. Keep in mind that this picture is a mirror image of how the quilt will look when it is finished. This is what the quilt will look like when you are looking at the paper blocks.

